

Pryda Wall Framer

Roof

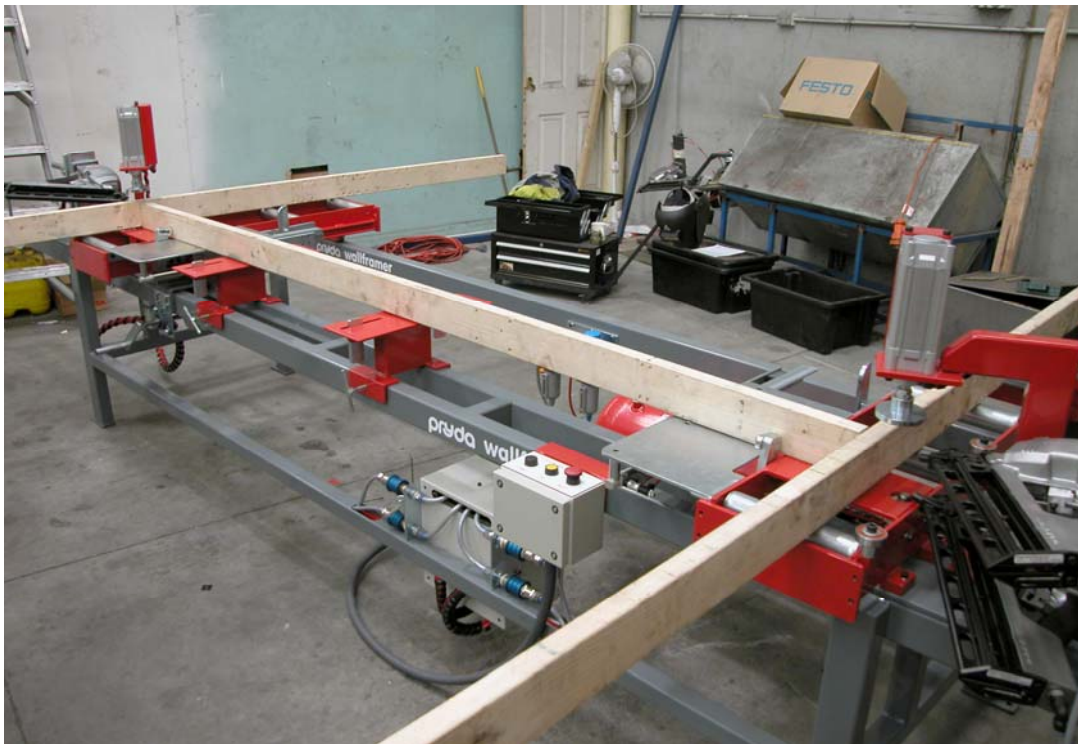
Wall

Floor

Sawing

Timber Jointing

Production Tools



- Four fixed nailing tools – stick or coil
- Left or right hand fixed side
- Full clamping of stud prior to nailing
- Quick wall height adjustment from “within” the console
- Suits both 70 and 90mm walls



Pryda Wall Framer

Pryda's latest design manual wall framer is a result of many years experience building wall framers for the industry. Incorporating many features that have been requested by operators, the manual wall framer is proving to be very safe and reliable. The built-in heavy-duty roller benches ensure effortless movement of even the largest wall frames.

The wall framer's control circuit has been redesigned to ensure that it is the safest possible system for a manual wall framer. Its presence sensing system not only detects the stud as per the older designs, but also the wall plate. Logic within the circuit also ensures these sensors can not be overridden like most of the older designs.

Being available in either left or right hand fixed side provides flexibility to suit almost all plant layouts. The wall height adjustment is from within the machine and the moving carriage's design proves to be an effortless task. Its final position is held firm by a positive pneumatic brake.

The wall framer incorporates an integral air receiver unit to provide continued air supply to the framer and a fast firing sequence. Nailing tools can be individually easily isolated via in-line valves.

SPECIFICATIONS

		Dimensions
Overall dimensions (std unit)	- width (overall)	mm 4500
	- depth	mm 1200
	- height (overall)	mm 1250
Working height	mm	820
Wall height (std unit)	mm	2000 to 3300
Weight (approx)	kg	1200
Installation requirements		
Power		N/A
Air		10 cfm @ 100 psi
Foundation		Level, sound concrete floor in both directions

RELATED EQUIPMENT

- Infeed and outfeed roller conveyors
- Coil or stick nailers
- Automated plate progressor systems
- Materials handling systems
- PlantNet distribution software
- Additional noggin table
- Optional larger wall frame height capacity
- Lateral stud clamping