

Spida CSS Saw

Roof

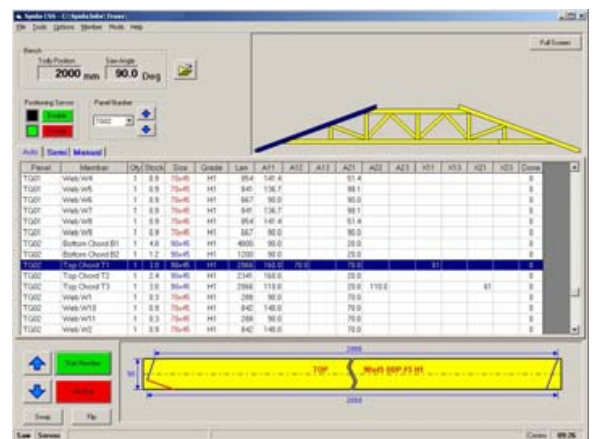
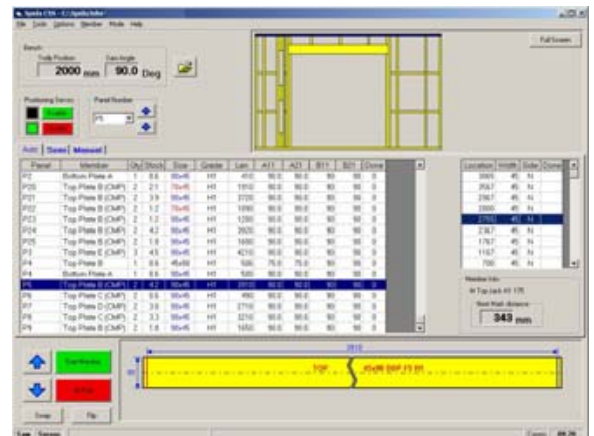
Wall

Floor

Sawing

Timber Jointing

Production Tools



- Designed for use in both truss and wall frame cutting
- The Spida CSS automatically sets up for angles and lengths, as downloaded from Pryda's software
- The Spida CSS can typically cut at least double the amount of a manual saw
- Jobs are downloaded to the saw via network or removable media
- Set up left or right hand timber flow to meet your requirements
- Simple operation via touch screen control

Spida CSS Saw

The Spida CSS saw has evolved from the industry proven Spida range of sawing equipment that has been used for over 20 years.

The saws automation system quickly and accurately positions the required angulation and length. Interface between Pryda's software provides accuracy and speed. The saw's touch screen operation further simplifies set up and control.

The CSS utilises high quality, industrial drives and components that gives long life and repeatable operation.

Operator safety and smooth operation has been provided with a continuous outfeed bench rather than potential shear points with conventional roller conveyors.

SPECIFICATIONS

		Dimensions
Arbor motor	kW/hp	4/5.5
Saw blade (TCT)	mm	450
Maximum depth of crosscut	mm	150
Maximum crosscut at 90	mm	600
Angular capacity		8.9 to 171.1
Mitre cut (max.)		45° to the left
Overall dimensions (std unit)	- height (overall)	mm 1900
	- length (overall)	m 10.82
		(based on 3m infeed & 6m outfeed))
	- depth (overall)	mm 1320
Weight (approx.)	kg	600

Installation requirements

Power	415 volt, 3-phase, 15 amp, 5-wire connected to overload box
Air	-
Foundation	Level, sound concrete floor in both directions

RELATED EQUIPMENT

- Extended heavy duty roller conveyor
- Timber clamping system
- Saw blade laser guide unit
- Drop saw bench
- Wall plate marking system
- Slave screen – an additional screen for a tailing-out operator to manually mark cut components
- Labeller – prints a label to stick to cut components for identification