

# ALPINE Trusset Jigging

- **Fast changeover** - Workers can make the setups within minutes.
- **Lower labor cost** - Setup procedures can be easily taught to any worker.
- **Improve quality** - Computer-generated setup data assures precise stop location accuracy
- **Fast payback** - TrusSet system is exceptionally cost effective.
- **Made in the USA** by Alpine.



**The simple, fast, low-cost truss jigging system**

**T**rusSet is the patented, low-cost truss jigging system that is certain to fill your needs. What's more, TrusSet is simplicity itself. Even inexperienced personnel can quickly and accurately set up the most complicated trusses. The system is designed and engineered for easy installation in most existing truss assembly tables.

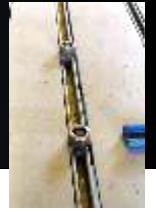


Positioning the stops is fast and easy. Simply sight down the extended face of the Unistrut locking to determine the exact position of the stop nut along the tape scale.

**ITW**  
Building  
Components  
Group Inc.

[www.alpineequip.com](http://www.alpineequip.com)  
800-755-6005

**ALPINE EQUIPMENT**  
A Division of ITW Building Components Group Inc.



## SPECIFICATIONS

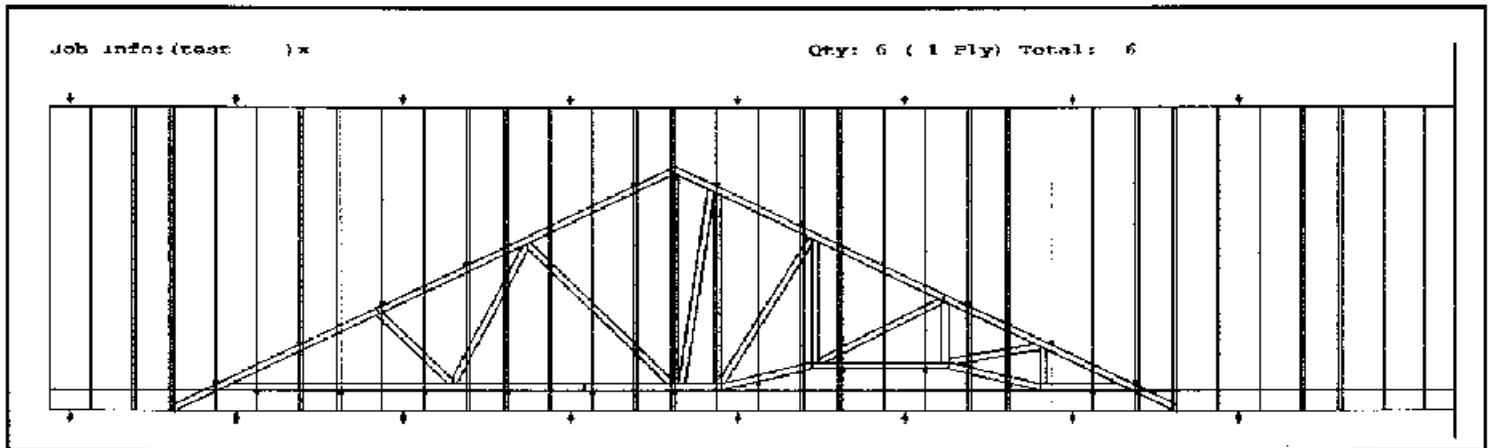
**U-Channel Depth** – 1 5/8-inch for use with 1 3/4-inch mounted below tabletop to avoid damage to rails.

**Length** – 14-foot standard. Other lengths available upon request.



Each Unistrut rail has two jig stops for the top and bottom chords.

The outer perimeter of the truss is accurately formed by using an 3/4-inch socket wrench to securely position two stops in each U-channel along the top and bottom chord.



Computer software generates a drawing of the truss to be built and indicates the location of each jig stop in feet and inches to within one-sixteenth of an inch.



2820 N. Great Southwest Parkway, Grand Prairie, TX 75050 • (972) 660-4422 • (800) 755-6005 • [www.alpineequip.com](http://www.alpineequip.com)

*World Leader in Computer Controlled and Automated Truss Manufacturing Systems*

